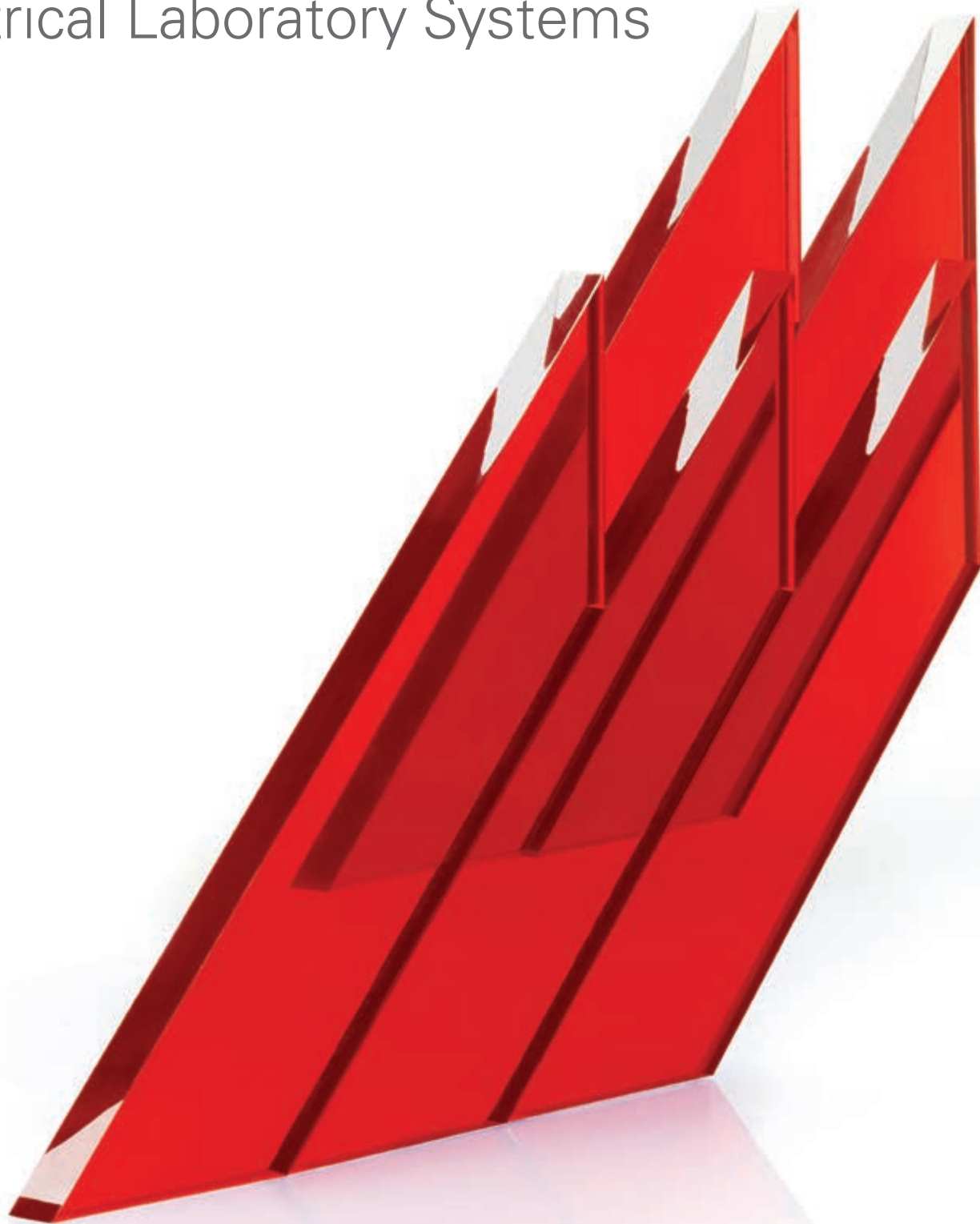
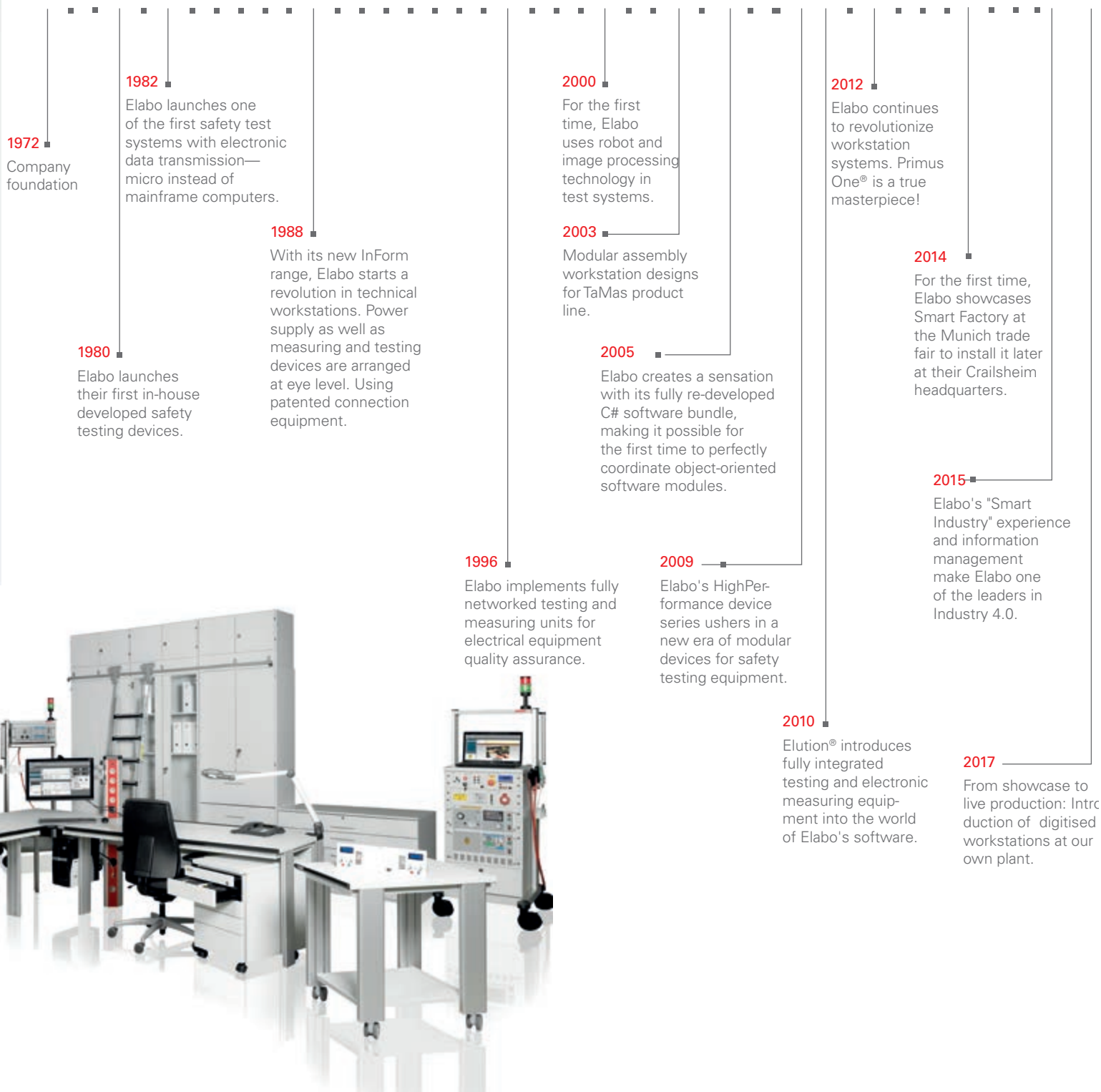


Smart  
Electrical Laboratory Systems

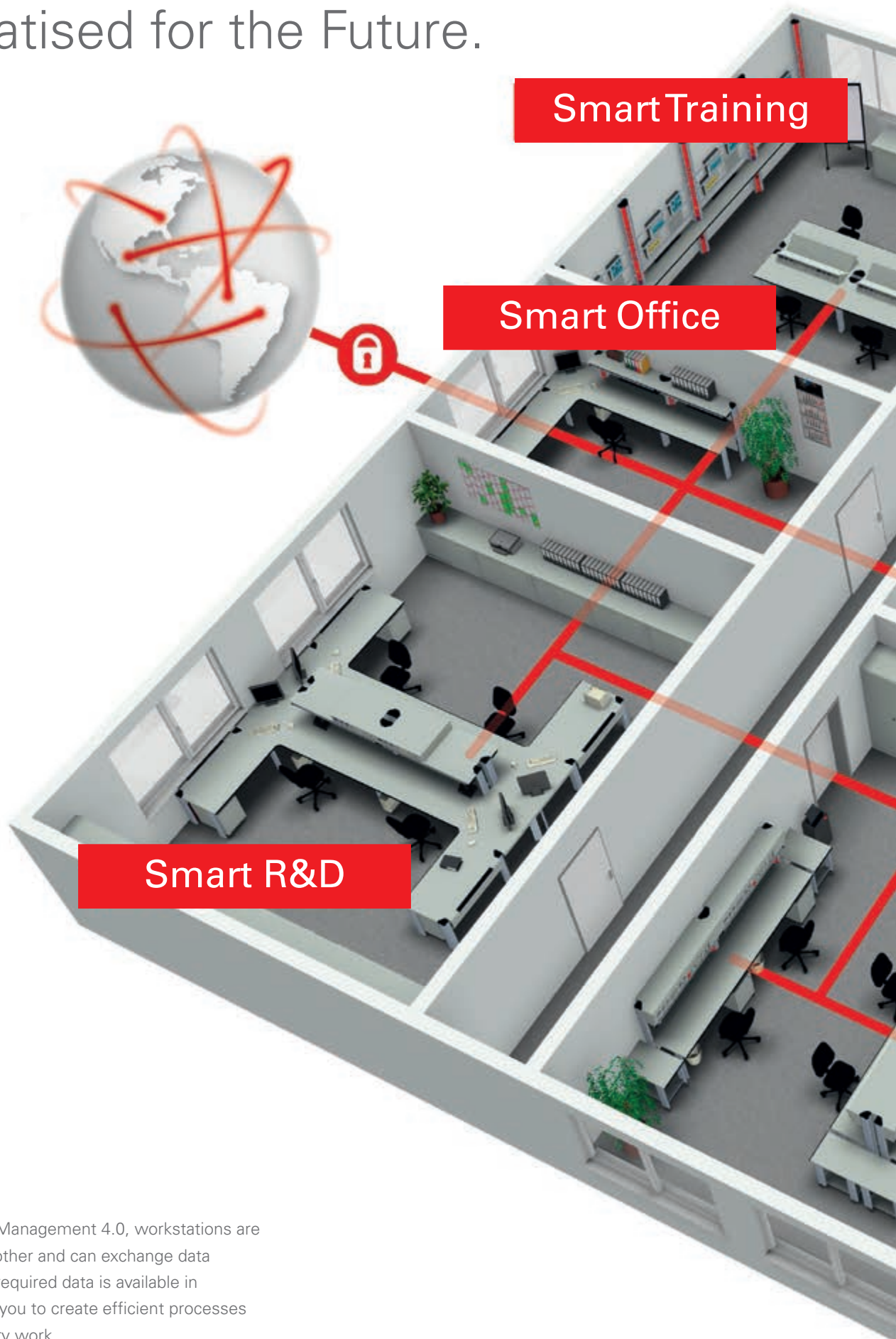








# Elabo Information Management. Informatised for the Future.



In Elabo Information Management 4.0, workstations are connected to one another and can exchange data continuously. All the required data is available in real time. This allows you to create efficient processes and avoid unnecessary work.



Smart QA

Smart Factory

Smart Logistics

Smart Service



# Working Environments For People With Ideas.





Amelectric equipment & tools – T. +31 499 475010 – E. info@amelectric.nl – W. www.amelectric.nl



Also available in ESD design.

# Has Work Ever Been More Attractive.

## Only Primus One® can do all that.

This high-grade technical workstation complies with major DIN standards. It is extremely rugged and resists weak acids and bases as well as benzene and oil. The table top is made of HPL (high pressure laminate) and the welded square tubing consists of high-grade steel.

- Ergonomic perfection for all requirements, very easy to operate with clearly arranged controls
- Timeless modern design
- Reinforced profiles for a new level of stability
- ESD-protected as per DIN EN 61340-5-1
- High surface loading capacity as per DIN EN 13150:2001-12
- 30 mm table top with 0.8 mm HPL material layer
- Short-term heat resistance
- Glare-free and abrasion-proof as per DIN EN 438
- Perfectly routed cables, also above the instrument shelf
- Modular assembly system for custom configurations
- Cleverly arranged operating and connection elements face the user and enable quicker and faster workflows
- Fold-away cable flap for more usable space
- Flexible height adjustment
- With custom electric equipment inside the table legs
- Improved Orga panel for more space
- Custom light colour for lighting the working area
- 19" integration of Elabo and third party devices with version 6HU, seamlessly and flush in every position
- Integration of 3HU devices







Also available in ESD design.

# 3HU Helps You With A Lot Of Things.

## Primus One® – the powerful one.

Primus One® 3HU makes optimal use of space because the devices are positioned on top. The bench is height-adjustable on request - like all Primus One® family benches - and the entire unit moves with it. The distances remain the same, whether you are sitting or standing at work. All the operating surfaces are ergonomically inclined towards the user to enable perfect operability and readability. Another highlight - the front edge is replaceable.



# 3HU



Amelectric equipment & tools – T. +31 499 475010 – E. info@amelectric.nl – W. www.amelectric.nl



Also available in ESD design.



# 6HU. The System. The Power.

## Primus One® - our masterpiece.

We continue to revolutionise workstation systems.

Primus One® incorporates all our expertise and experience, plus new features that make Primus One® so unique.

It is the logical evolution of our successful InForm series. This new technical workstation combines all we do best and what has demonstrated its worth over decades. Many additional and improved features make this a versatile, flexible, high-grade workstation with a mature design in every detail, leaving nothing to be desired.

Typically Elabo.



# 6HU



Amelectric equipment & tools – T. +31 499 475010 – E. info@amelectric.nl – W. www.amelectric.nl



Also available in ESD design.

# Open-Ended Bench Rack.



Take me up, please.

Primus One® has an open-ended technology, providing numerous possibilities for customised superstructures. Apart from our classic 3HU and 6HU models you can add shelves with or without sliding doors, instrument shelves and function shelves onto Primus One®. See the illustration for optional superstructures.

The fixings are invisible from outside, and the height extender can move up almost endlessly in vertical direction. A sophisticated system of bars and fixing bolts holds everything safely together.





### Nice and tidy.

Very easy to operate and ergonomically perfect for every requirement: Operating and connection elements face the user for fast and easy workflows. This creates room for what really counts.



### It's all about the right mix.

You can use Elabo devices and components as surface space for your own measuring equipment and supplies.



### Customised shelving.

An extremely handy shelf with a lot of storage space, and it is also height-adjustable. Thanks to the provided electrification, you can supply your devices exactly where they are positioned.



### Great accessories.

The storage tray with tool carrier is for hanging into the profile system. But this is just one of the many options for extension.

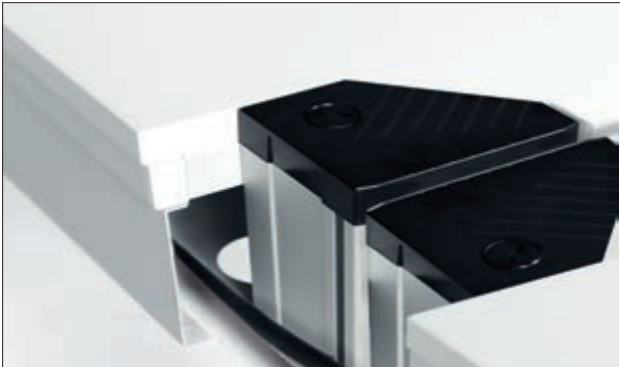


# It Is All In The Detail.



## Up, up, and up.

Whether you are sitting or standing - our height adjustment lets you work functionally and ergonomically - and you can also retrofit this feature.



## Benches in a row.

Placed in rows, the cables remain virtually invisible. You do not have to route them along the floor but can place them in a cable duct from bench to bench.



## Reinforced profiles, variable front edge.

More stable than ever in proven Elabo quality. Visually modern and replaceable front edge.



## Ergonomics at its best.

As a standard feature, the front table legs can be moved - ensuring more legroom. The Primus One® can sit right on the wall. Skirting boards are not a problem.





## Primus One® – the differences.

Primus One® gives a behind the scenes look into what it has got in it.

It has more than just visible strengths - there are also hidden highlights. Underneath the solid HPL table top there is a bench frame made from welded square tubing in high-grade steel. You will also find the cable duct here, enabling efficient cable routing. Take note of its ergonomic features, such as height-adjustable table legs and worktop, or moveable table legs with reinforced profiles.



Also available in ESD design.



# Balancing Functionality With Aesthetics.

A firm grip on everything.

We developed this product with a symbiosis of design and functionality in mind.

Primus One® is visually pleasing and also fulfils its users' needs in every detail.

It just takes a single hand movement to quickly and easily open and close the cable flap. Larger storage spaces are to the left and right for, e.g., monitors. Thanks to specially designed fold-away technology, the devices on the cable flap are never in the way.



### Short does it.

Primus One® is also available with a shorter profile and without a superstructure. A clever idea, for example for simple assembly tasks or office work.



### Strong slot on the profile.

Use the heavy-duty slot for an array of standard attachment parts such as monitor bracket, lamps and accessories.



### Refined in every detail.

Not only functional, but also visually stunning. Here you can see our attention to product details.



### Fold-away cable flap with connectors.

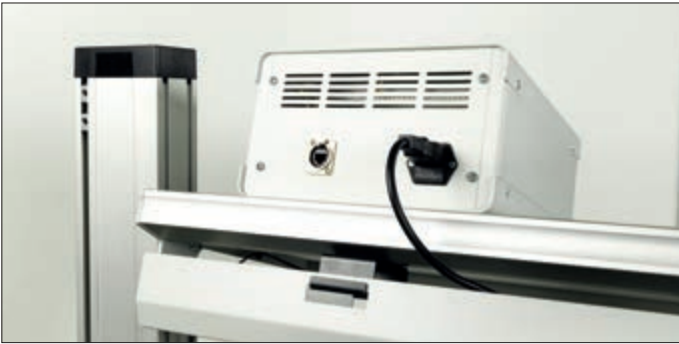
Power supply integrated with the bench, making it available at the workstation itself. This provides larger storage spaces to the left and right of the cable flap.





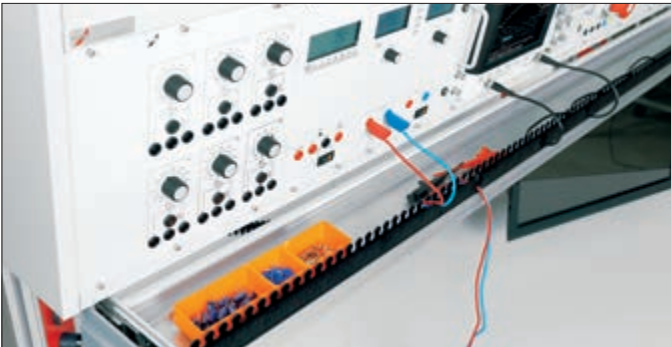
### Easy does it.

As the PC connections show, electrification under the table top is also perfect. Retrofitting accessories is equally easy: Simply position the slot nut wherever you need it on the profile - the nut has a clip to hold it in the position you want.



### At second sight.

Well-thought-out solutions you will only discover at second sight. The function tray for the function shelf takes care of excess cables and provides space for commercial socket strips.



### No holdup, but holding space.

We have extended our Orga panel. Instead of a drawer, users now have far more storage space, thanks to a variety of Orga elements.



### To be on the safe side.

We optimised the provided space by adding fuse protection inside the base table - eliminating the need for an additional bench rack or device duct - as well as integrating the cable duct above the instrument shelf.



# Perfect Cable Management And First-Class Electric System.

Primus One® – the tidy workplace.

Power cable, ISDN extension, LAN connection; white, black, or colourful- your eyes, or even yourself, may stumble over cable tangle between computer, monitor, and telephone system, plus it is a common mud trap. Primus One® has an impressive cable management. Clever ducts in its triangular profiles and the bench itself are used for routing the cables- making them invisible and safe at the same time.

Cable management also supports the height-adjustment feature because the cables move up or down with the bench.

By eliminating static working positions, this is a very flexible and ergonomic feature.



Also available in ESD design.





# Put your work in its true light.

## Perfect illumination of your work space.

Our illumination is user-friendly, energy-efficient, durable and can be retrofitted. The work space is ideally illuminated. Your choice of light colour creates a pleasing customised working atmosphere.

We use advanced LED technology to ideally illuminate the entire work space.

Two variants are available:

1. LED fluorescent lamp in 4000 K and 6000 K light colours
2. LED segment technology, dimmable from 0 to 100% and continuous adjustment of the light colour in a range from 3000 K to 5000 K, touchpad operating unit and an optional LAN interface for controlling the LED light segments.



Adjustable and with customised light colour in LED technology.



# System 80.

## A multitude of fixtures.

Primus One® is also available with a shorter profile and without a superstructure. A clever idea, for example for simple assembly tasks or office work.



## Profiles with interfaces.

Modern measuring equipment uses interfaces for communication. Our Primus One System has interfaces integrated with its profiles - so you can even install switches exactly where you need them.



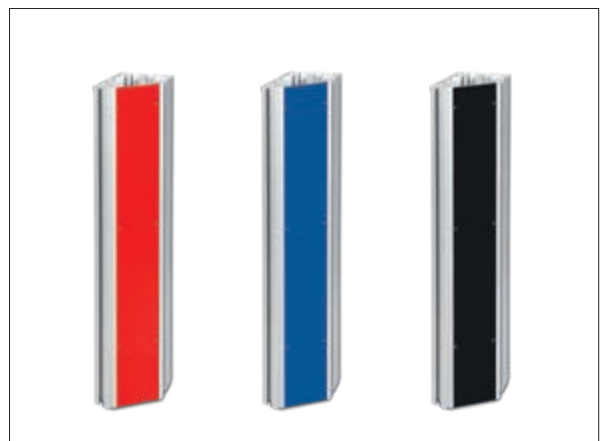
## Connections where you need them.

No matter what type of socket or port you need - we deliver customised as well as standard profile faceplates so we are sure to find the right solution for you.



## Customised colours.

We all know that no two tastes are the same. We want you to choose exactly what you like so we are offering the Primus One System profile plates in three standard colours. If you wish, we can even manufacture them in other RAL hues.







## Highly condensed design.

Space is precious. That is why we do not waste any. Our 3HU System is a perfect example for using every single inch of space. The width of devices and modules is determined by the needs of their electronics.



## You would like some extras?

As to the choice of devices, we leave nothing to be desired. To mention just a few, we provide:

- Protection units
- Fixed and variable AC / DC supplies
- Measuring and testing equipment
- Pneumatics system, soldering equipment, interfaces



## Automated data recording.

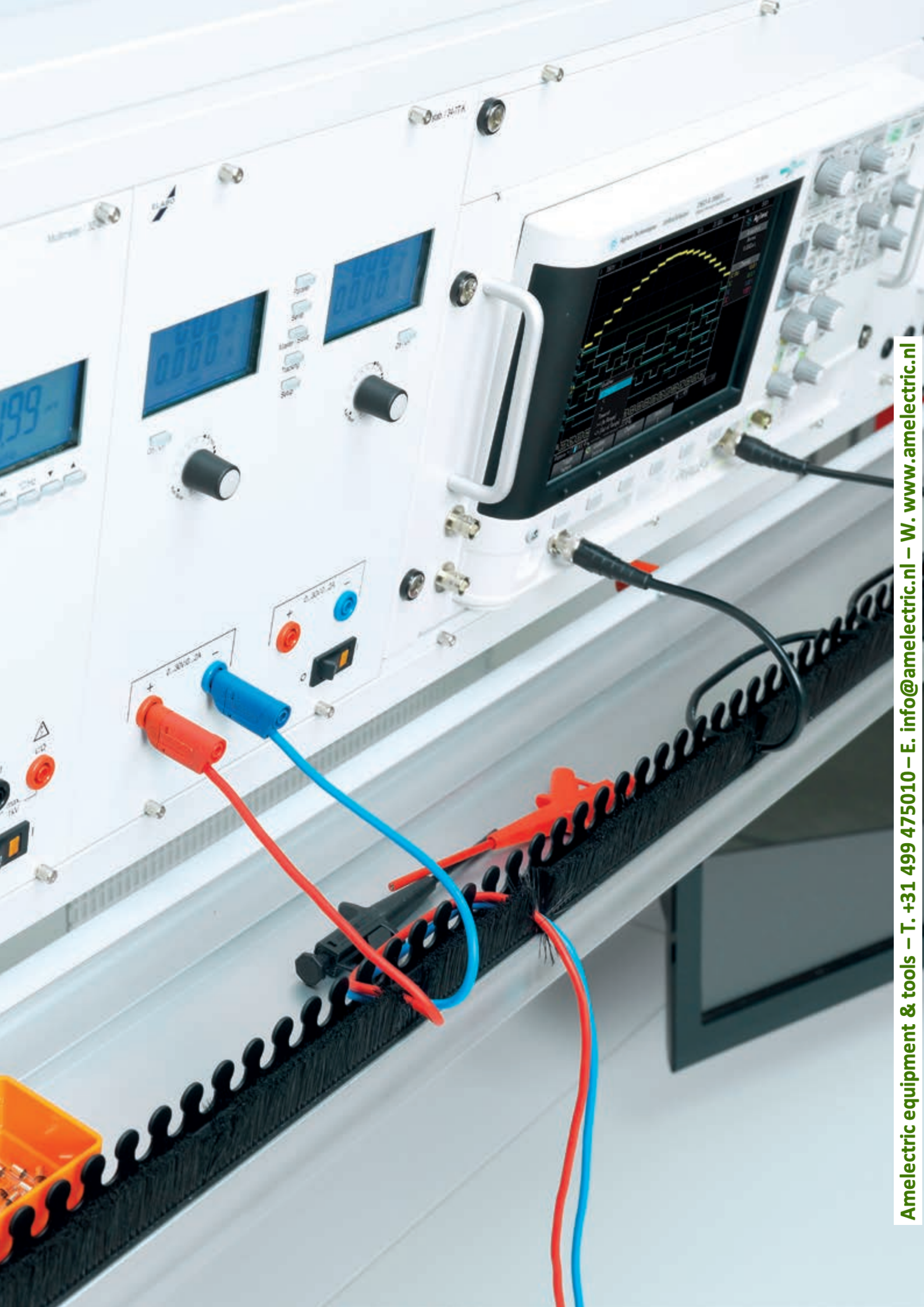
Good bye, tedious and manual data recording. Our modern measurement workstations have multiplexers and programmable switching fields for making software-controlled data recording even more effective. Including analysis.



## For independent use.

Each device is a dedicated functional unit and independent from a centralised control unit. If you need to use the device somewhere else you can move it easily and quickly.







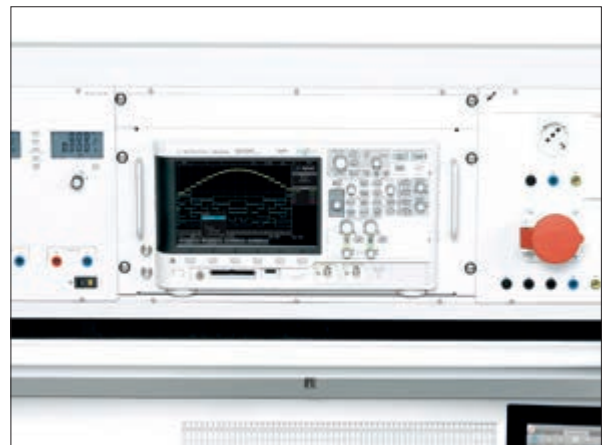
## Limitless power.

Having enough power and functionality makes you feel confident that you can rise to any challenge. The Elabo 6HU Electronics System leaves nothing to be desired—in particular in terms of voltage or power supply.



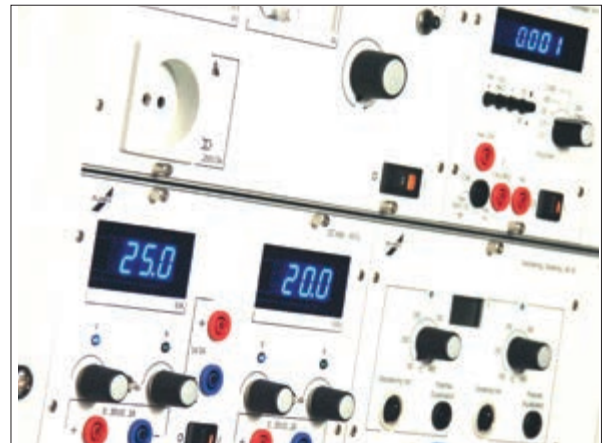
## Open for everything.

The Primus One 6HU bench rack has been optimised for Elabo or 19" third party devices. They integrate seamlessly into a shapely unit and look as if they were meant for each other.



## 1 + 1 = 3

The Elabo 3HU and 6HU Electronics Systems are perfectly coordinated to achieve not only twice the functionality but also use every cubic inch of the system- so even mathematics sometimes reaches its limits.



## Intuitive usability.

Intuitive usability, coupled with a high level of precision and functionality, facilitates daily workflows and enables you to concentrate on what counts- your measuring task.





# Elution®.

## Smart Support.

One of Merriam Webster's definition of "smart" is "appealing to sophisticated tastes." There is no other way of describing our Elution® software more aptly.

It "appeals to sophisticated tastes" because

- Programming its automated data recording is as easy as the ABC
- It remote controls all connected devices using a centralised computer
- It needs only a few mouse clicks for analysing data
- Recorded data are immediately available across the entire network
- Elabo data management provides all the required data

These are only some of the highlights of our comprehensive software bundle. Please contact us for a more detailed presentation of the software's functionality.





# CIS - Connected Industry System

Our new innovative CIS system with GABT functional elements

**B**ase unit

**C**onnection unit

**O**perating unit

**T**echnology unit

proves itself with a flexible und variable operating concept.

It can be used in

- Research and development
- Service and repairs
- Quality assurance
- Production and assembly
- Training







Also available as an ESD version.



# CIS - Connected Industry System



## Base unit..

- Space-saving and flexible
- Can be extended using Open Space technology
- Cable duct can be integrated with a foldaway cable door
- Free-standing or wall-mounted installation
- Integrates mains on/off panel, sockets, emergency OFF, DC supply
- Installation of shelves and cockpit structures
- LED illumination, dimmable und continuous setting of light colour
- ESD-certified base unit
- ESD permanent monitoring system can be integrated
- Optimises component transport together with a mobile side table



## Connection unit.

- Flexible
- Swivel-mounted, integrated with column or fitted to the table
- Optimised cable routing for hazard-free working
- Can be positioned ideally and ergonomically for the test candidate
- Durable and robust design
- Tamper-proof



## Operating unit.

- Flexible position can be chosen as needed and is ergonomically inclined towards the user
- Devices can be operated and controlled via a tablet PC
- Create different customised layouts and configurations to control the devices
- Easy intuitive device operation
- Different services for controlling devices, adjusting table height, activating workplace and control light segments (LED)



## Technology unit 19"

- Mobile design
- Enables flexible use in the room
- Can be used by multiple users
- Connection via system connectors in the profile columns
- Integration of
  - AC mains panels 1-phase or 3-phase
  - DC stabiliser
  - AC stabiliser
  - Multimeter

4.0



Amelectric equipment & tools – T. +31 499 475010 – E. info@amelectric.nl – W. www.amelectric.nl



Also available as an ESD version.

# Solve Your Tasks Where They Arise.



## Efficient and well-thought-out.

The Power Cart provides a lot of storage space in the base tray with a safe, lockable access flap.



## Comfortable and well equipped.

Mobile workstation does not mean that you have to limit your field of operations. Quite the contrary: Thanks to its steel metal drawers you can take everything you need with you. Available for Carrier Cart and Power Cart.



## Bright and friendly.

Shedding the right light- adjustable and perfectly illuminated with LED technology. Also customisable is the electric equipment.

## Primus One<sup>®</sup> - Mobile.

Fully equipped and right where you need it - Primus One<sup>®</sup> Mobiles. They bring solutions to where quick action is required. Our mobiles have major supply and measuring devices on board as well as PCs with measuring software and network technology.







Amelectric equipment & tools – T. +31 499 475010 – E. info@amelectric.nl – W. www.amelectric.nl



Also available in ESD design.



# Elabo Cabinet Systems.

## Keeping Order With System And Quality.

Our cabinet system portfolio comprises an extensive range of tall and side cabinet elements for use in laboratories or offices.

A wide variety of fixtures such as shelves, drawers and registries helps keep everything in place.



Also available in ESD design.

### Fit for cleanrooms.

Thanks to all-around sealing lips in ecologically safe material, our cabinet systems can also be used in cleanrooms.



### Interlocks perfectly.

Full metal shelf carriers with stoppers support the shelves and provide additional stability to the entire construction.



### Nothing will fall through.

Proven European fitting grid enables expert installation of full-metal hinges and easy attachment of all fitted elements.



### Customised design options.

Steel metal drawers on metal ball bearing guides provide an end-to-end filing system with numerous subdivisions and help you keep everything in order.



Working environments for people with ideas.



7620EFE/18-01 Subject to technical changes without notice.

**Amelectric equipment & tools – T. +31 499 475010 – E. [info@amelectric.nl](mailto:info@amelectric.nl) – W. [www.amelectric.nl](http://www.amelectric.nl)**